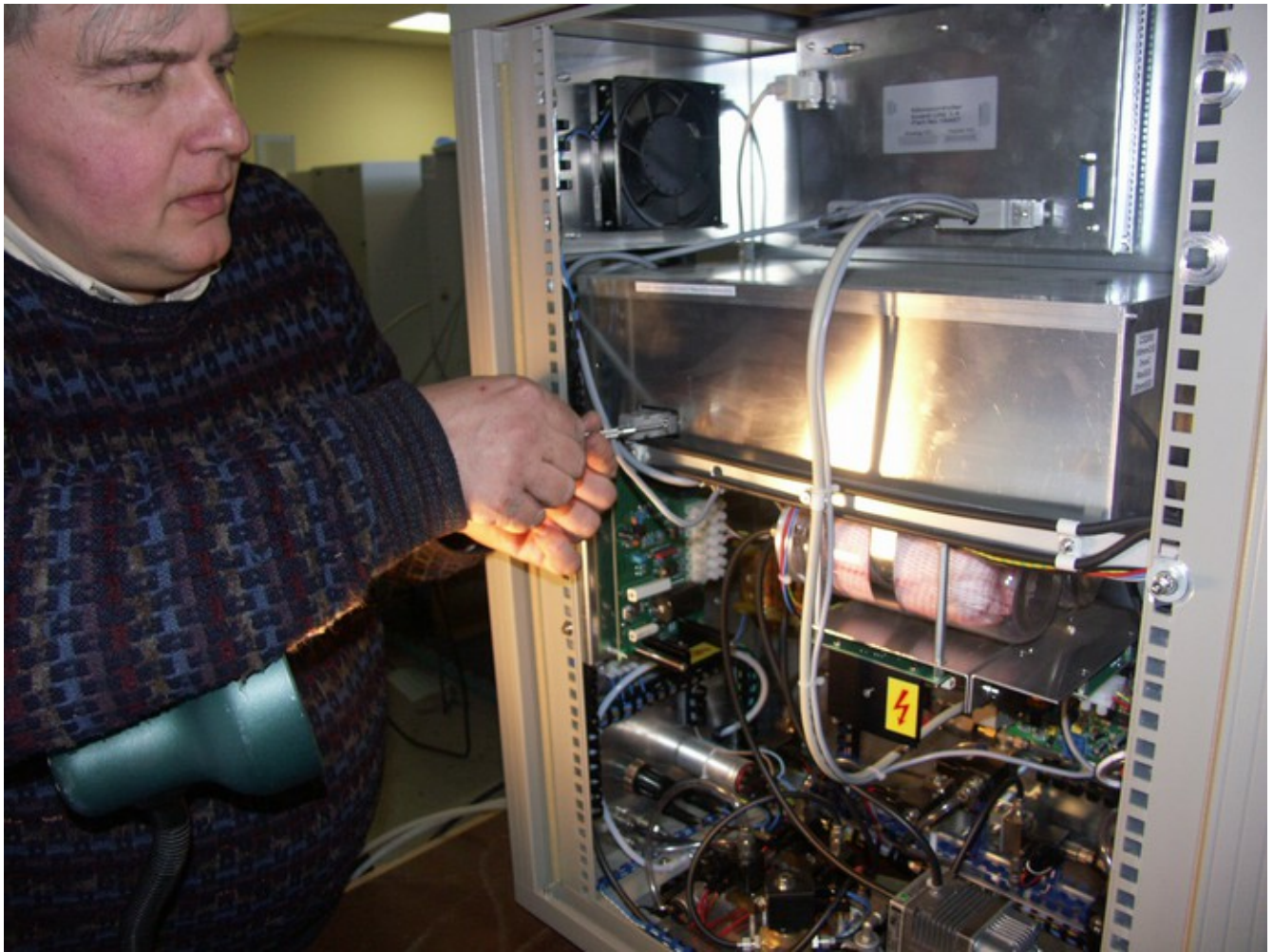


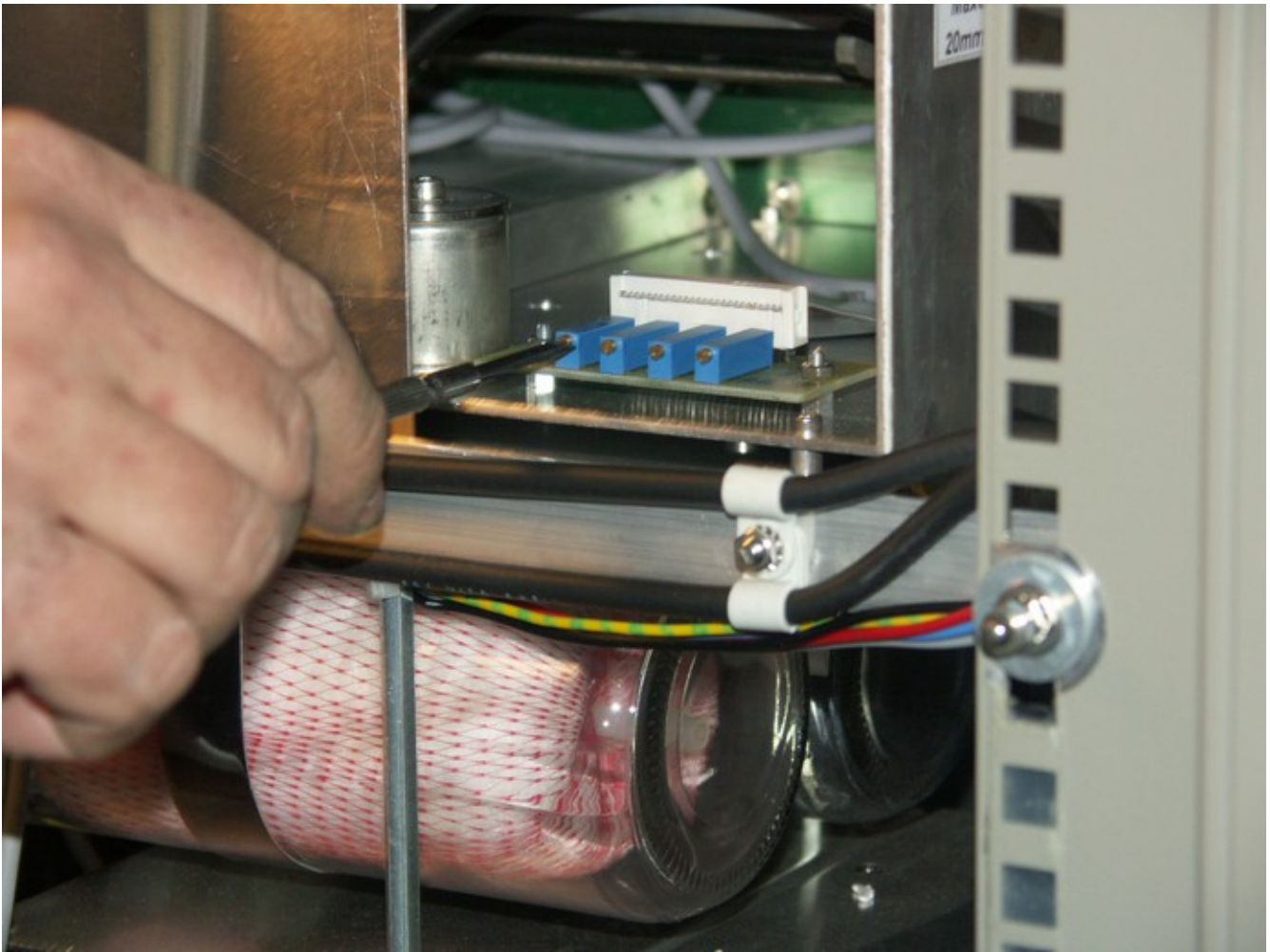
Open the Uni software and open the “Baseline” window, you can increase the window in order to see it better (I did that) . Look at the voltages marked “output” in that window. In normal conditions (when the instrument has been ON for at least 2 hours these voltages should be close to zero, anyway no more than 3 volts or less than -3v . If any of these voltages are out of these limits you should try to adjust them . Keep the baseline window open and open the left side of the instrument



Using a small flat screwdriver remove the cable on the left side of the IR cell box.



Slide the left panel back but be careful, there are a lot of tubes in the back, make sure the panel does not damage any of them.



You can see 4 “trim pots” (adjustable resistors), with the same small screwdriver try to adjust the outputs as close to zero volts as possible, rotate the screwdriver slowly, do not go too far. The trim pots are in the same order, the first one in the back is the LC, than HC, LS, HS.