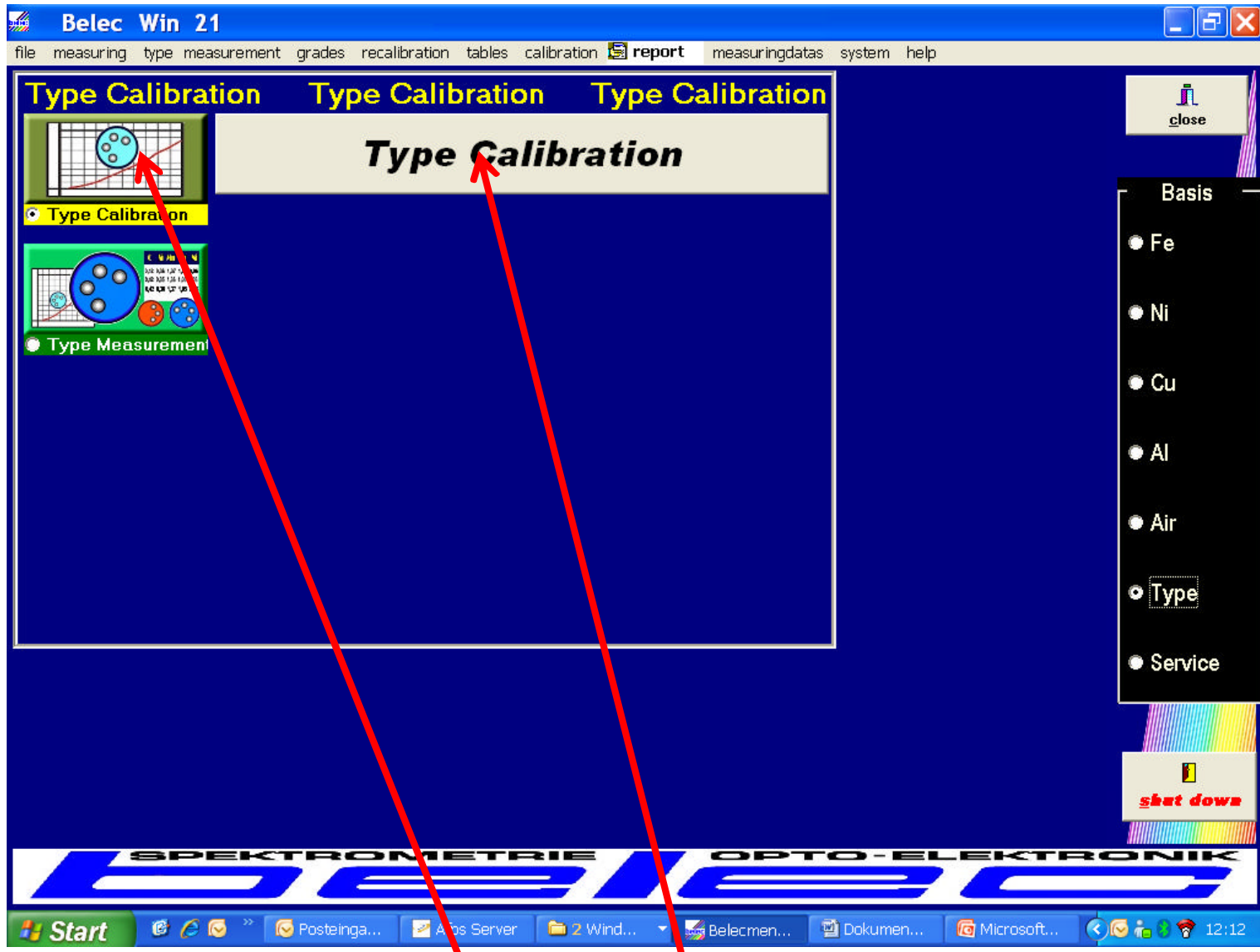
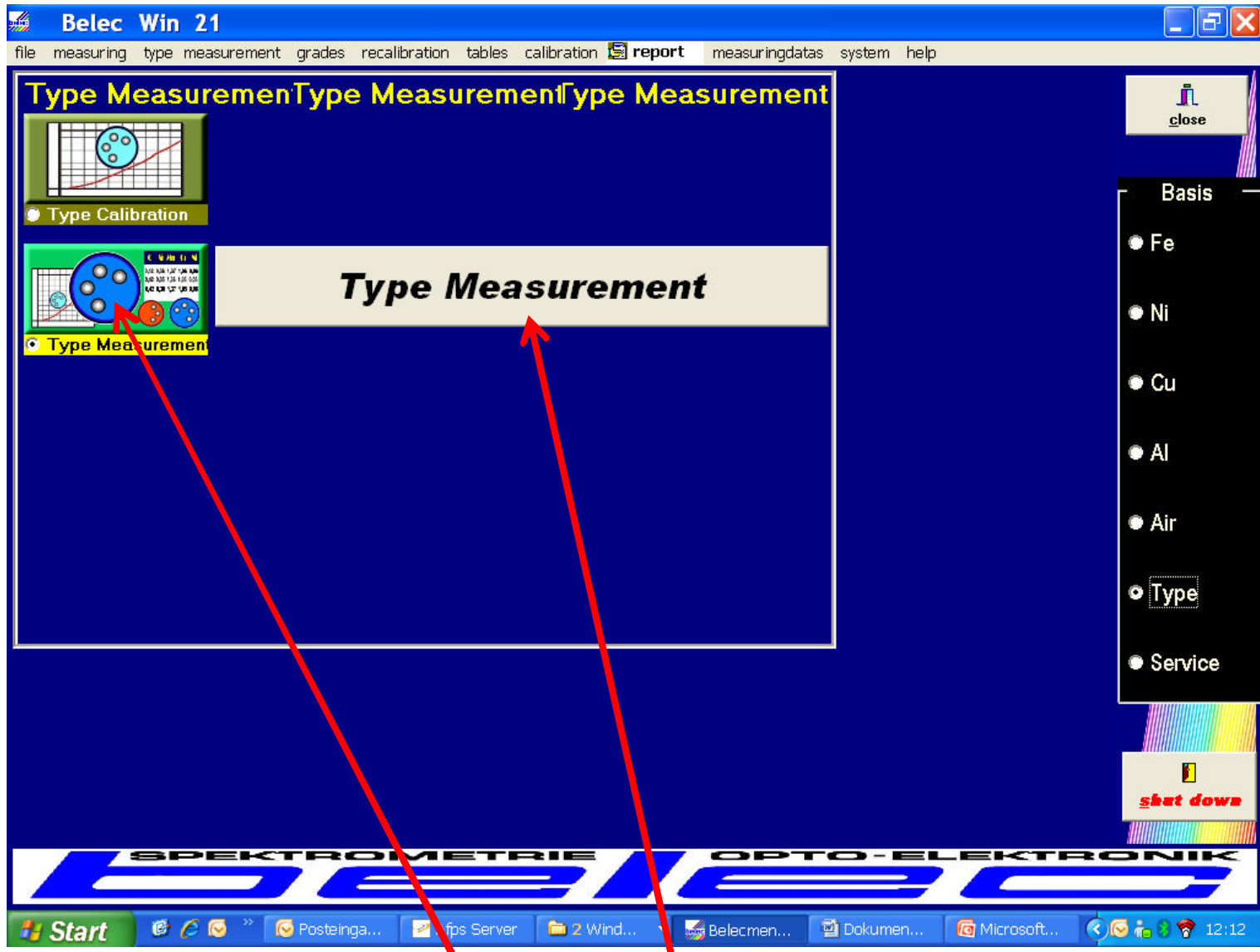


Click on „Type“ for type measuring and type calibration



1. 2.  
Select for type calibration



1.

2.

Select for type measurement

Type Measuring

measuring program	Program No.	type description	type no.	measuring-no	Grade-No	Grade-Description
Cr-Ni-Stahl	13	Typ V4A	4571	Mittel	1.4571	V4a

No

No

type listing

Entries in Type table 5

Type No	Type - description	program
1	108	13
2	59C	11
3	81D	13
4	8E	11
5	6	13

chooseable types

Position

show

close

Start End printprotocol file protocol Type desc. aver. Standard calc. Sample identification direct print print save

Start Posteinga... Afps Server 2 Wind... Belecmen... Dokumen... Microsoft... 12:13

Type measuring and/or type calibration:  
Select the type

Type Measuring

measuring program	Program No.	type description	type no.	measuring-no	Grade-No	Grade-Description
Cr-Ni-Stahl	13	Typ V4A	4571	Mittel	1.4571	V4a

No

No

**type listing**

Entries in Type table: 5

Type No	Type - description	program
1	108	13
2	59C	11
3	81D	13
4	8E	12
5	G	13

3

show

choose  
close list

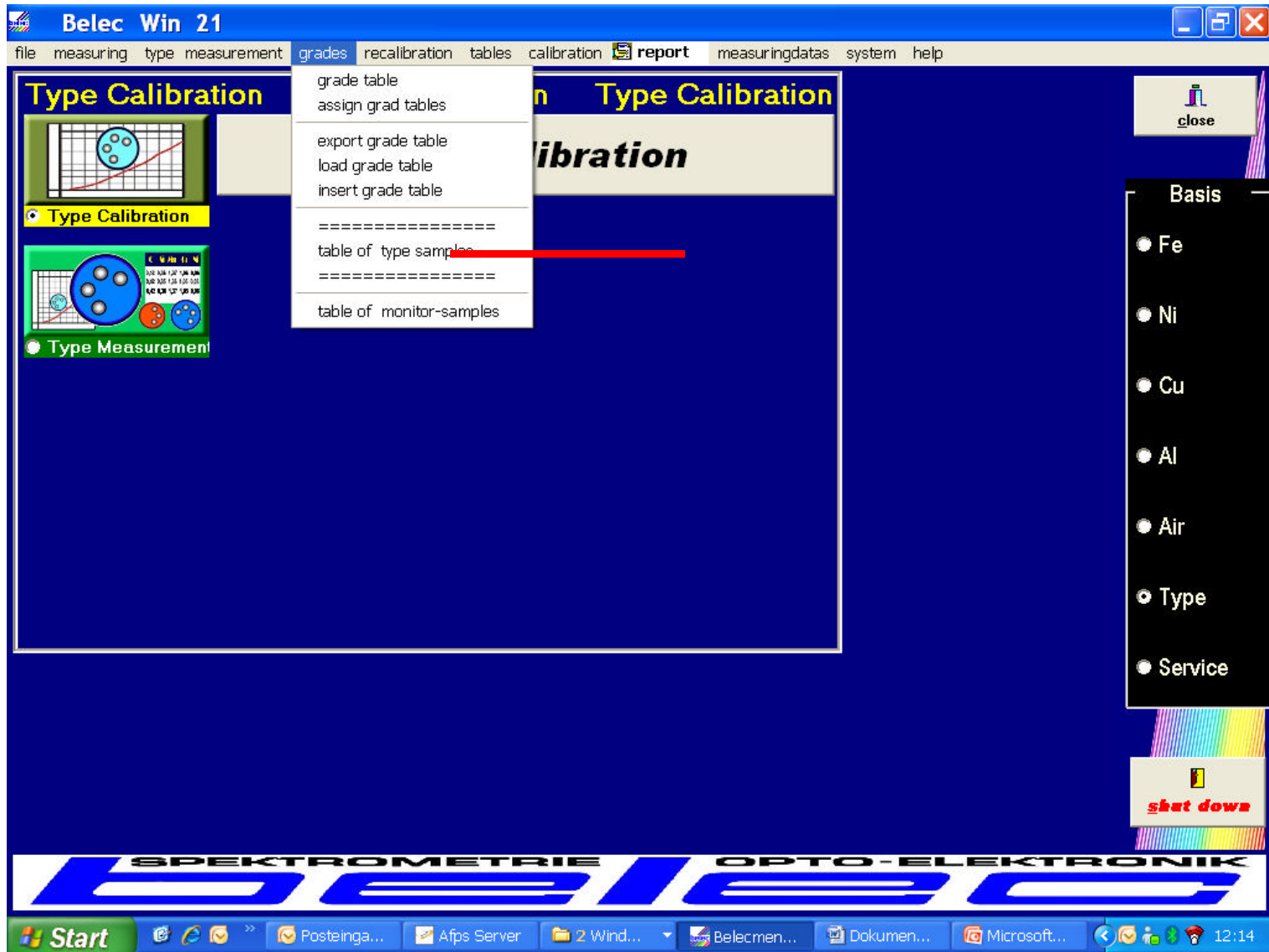
Start End printprotocol file protocol Type desc. aver. Standard calc. Sample identification direct print print save

Start Posteinga... Afps Server 2 Wind... Belecmen... Dokumenten... Microsoft... 12:13

Confirm with „Choose“,

In „Calibration: run the type calibration sample 2-3 times ,calculate the average, save the factors

In „measuring“ : run the sample and average after 2-3 sparks like in regular analysiprogram



Click here to access the type table

The screenshot displays a software interface with a 'Type Table' window and a 'Basis' menu. The 'Type Table' window contains a table with the following data:

type no.	type desc.	measuring	recal-time	description
1	108	13	3	4550
2	59C	11	3	-
3	81D	13	3	-
4	8E	12	3	-
5	6	13	3	-

The 'Basis' menu is located on the right side of the main window and includes the following options:

- Fe
- Ni
- Cu
- Al
- Air
- Type
- Service

A 'shut down' button is visible at the bottom right of the main window. The Windows taskbar at the bottom shows the Start button and several open applications.

Click here to establish a new type

Click here to access the type table entries for one specific type

The screenshot displays a software interface for managing type tables. The main window, titled 'Type Table', shows a list of entries with columns: type no., type desc., measuring, recal-time, and description. An 'entries of type table' dialog box is open, showing a form for editing a specific entry (type no. 3) and a table with columns: Element No., Symbol, Nominal Value, Measured Value, and kind of correcti. A red arrow points from the 'Measured Value' column in the dialog box to the 'Type' option in the 'Basis' menu on the right.

type no.	type desc.	measuring	recal-time	description
1	108	13	3	4550
2	59C	11	3	-
3	81D			
4	8E			
5	G			

Element No.	Symbol	Nominal Value	Measured Value	kind of correcti
2	C	0,058		0 additive
3	Si	0,53		0 multiplicative
4	Mn	1,58		0 multiplicative
7	Cu	0,23		0 additive
10	Cr.	18,33		0 multiplicative
11	Mo	0,32		0 additive
13	Ni.	8,46		0 multiplicative
14	V	0,05		0 additive
15	Ti	0,003		0 additive
16	Nb	0,005		0 additive
17	Co	0,12		0 additive

type table entries with „nominal values ( certified values ) and“measured values (taken from last type-calibration )

Kind of correction : additive for concentration < 0.5 % and reference element (Fe )

Multiplicativ for concentration > 0.5%, to be selcted by scroll-down-menu